



Uniview®

1000 | 3000 | 3100 | 3200

Solar Protection With a View

Uniclass	EPIC
CI/SfB	
(76.79)	Tn6

Solar and Optical Properties

Solar Gain

The amount of heat increase resulting from solar energy entering a room. It is the total of three separate parts - the amount of energy transmitted directly into the room, the energy which is absorbed by the blind and a proportion of the energy which is absorbed by the window.

Shading Co-efficient

The solar heat gain with the blind at the window divided by the solar heat gain with no blind at the window. The lower the shading co-efficient, therefore, the higher the efficiency of the fabric.

Uniview® Solar and Optical Performance																	
	Solar			Visible			UV	QRF	CF	GTOT				SC			
	RS %	TS %	AS %	RV %	TV %	AV %	Block %			SG	DG	TG	DGLE	SG	DG	TG	DGLE
Uniview® 1000																	
Limestone	75	12	14	86	10	4	100	8	6+	0.28	0.32	0.33	0.33	0.33	0.36	0.37	0.37
Pale Ochre	63	8	29	72	5	23	100	7	6+	0.33	0.36	0.36	0.38	0.38	0.42	0.42	0.43
Canvas	53	5	42	60	3	37	100	6	6+	0.38	0.41	0.40	0.42	0.44	0.47	0.46	0.48
Admiral Grey	29	2	70	32	0	68	100	3	6+	0.50	0.51	0.48	0.53	0.57	0.59	0.56	0.61
Fossil	7	0	93	7	0	93	100	1	6+	0.61	0.61	0.56	0.63	0.70	0.70	0.64	0.72
Uniview® 3000																	
Crystal	70	18	12	81	16	3	95	8	6+	0.32	0.34	0.35	0.35	0.37	0.40	0.40	0.40
Beige	56	20	24	63	16	20	92	6	6+	0.40	0.41	0.40	0.42	0.46	0.47	0.46	0.48
Soft Steel	39	9	51	43	6	51	95	4	6+	0.46	0.47	0.45	0.49	0.53	0.54	0.52	0.56
Pearl Grey	48	11	41	54	8	37	95	5	6+	0.42	0.44	0.42	0.45	0.48	0.50	0.48	0.51
Stellar	10	7	83	11	6	83	94	1	6+	0.61	0.60	0.55	0.62	0.70	0.69	0.64	0.71
Black/Brown	7	6	86	7	6	87	94	1	6+	0.62	0.62	0.56	0.63	0.71	0.71	0.65	0.72
Jet	3	6	90	4	6	90	94	0	6+	0.64	0.63	0.58	0.65	0.74	0.73	0.66	0.75
Uniview® 3100																	
Winter White	70	19	11	81	17	2	96	8	6+	0.32	0.34	0.35	0.35	0.37	0.40	0.40	0.40
Linen	60	18	22	69	15	16	95	6	6+	0.37	0.39	0.38	0.39	0.43	0.45	0.44	0.45
Shadow	56	12	33	64	9	27	96	6	6+	0.38	0.40	0.39	0.41	0.44	0.46	0.45	0.47
Storm	53	8	39	62	6	32	97	6	6+	0.39	0.41	0.40	0.42	0.45	0.47	0.46	0.49
Nutmeg	47	7	45	55	6	39	95	5	6+	0.42	0.44	0.42	0.45	0.48	0.50	0.48	0.52
Twilight	47	7	46	56	6	38	95	5	6+	0.41	0.44	0.42	0.45	0.48	0.50	0.48	0.52
Uniview® 3200 Superfine																	
Prima	68	18	14	77	15	8	95	7	8	0.33	0.35	0.35	0.36	0.38	0.40	0.41	0.41
Dune	58	20	22	66	16	19	95	6	8	0.38	0.40	0.39	0.41	0.44	0.46	0.45	0.47
Spark	51	15	35	56	11	33	95	5	8	0.41	0.43	0.41	0.44	0.48	0.49	0.48	0.50
Urbane	43	13	44	49	10	42	95	5	8	0.45	0.46	0.44	0.47	0.52	0.53	0.51	0.54
Astral	39	13	49	42	9	50	93	4	8	0.47	0.48	0.46	0.49	0.54	0.55	0.52	0.57
Spectre	9	9	82	10	8	82	92	1	8	0.61	0.61	0.56	0.62	0.71	0.70	0.64	0.72

Glossary

T: % Transmittance. **R:** % Reflectiveness. **A:** % Absorption. **UV Block:** Percentage of UV light blocked by the fabric. **QRF:** Quick Reference Factor **CF:** Colour Fastness. **gtot:**The solar factor entering a building through a window and the shading device combined. **SC:** Shading Co-efficient. **SG:** Single Glazing. **DG:** Double Glazing. **TG:** Triple Glazing. **DGLE:** Double Glazed Low Emissivity.

Uniview® - Solar Protection With A View

Uniview® 1000, 3000, 3100 and 3200 Superfine fabrics are designed to satisfy the highest technical and aesthetic standards as demanded by today's residential, commercial, educational and healthcare applications. Providing the best in transparent solar shading solutions, Uniview® fabrics are durable, washable and will not fray. Achieving the BS5867: 2008 Part 2 Type B standard for flammability standard, Uniview is also non-toxic, UV and bacteria resistant.

Uniview® Specifications							
Series	1000	3000		3100		3200 Superfine	
Colour Range	5	7		6		6	
Roller Roll Length	25-27m	29-31m for 1.83m & 2.5m widths	20-22m for 3m widths	29-31m for 1.83m & 2.5m widths	20-22m for 3m widths	29-31m for 1.83m & 2.5m widths	20-22m for 3m widths
Roller Roll Width	1.83m / 2.5m	1.83m / 2.5m / 3m		1.83m / 2.5m / 3m		1.83m / 2.5m / 3m	
Vertical Roll Width	N/A	N/A		N/A		89mm	
Fabric Composition	25% Polyester 75% Vinyl on Polyester	30% Polyester 70% Vinyl on Polyester		25% Polyester 75% Vinyl on Polyester		25% Polyester, 75% Vinyl on Polyester	
Mesh/cm	20 x 6	19 x 19		20 x 19		26 x 22	
Mesh Weight	690g/m ²	410g/m ²		510g/m ²		325g/m ²	
Yarn Diameter	0.5mm x 0.5mm	0.33mm x 0.33mm		0.33mm x 0.33mm		0.24mm x 0.26mm	
Thickness	1.00mm	0.53mm		0.57mm		0.43mm	
Breaking Strength	300 x 300lbs ASTM D5035	330 x 330lbs ASTM D5035		330 x 330lbs ASTM D5035		1350 x 1100lbs ASTM D5035	
Abrasion Resistance	>1000 (ASTM D4966)	>1000 (ASTM D4966)		>1000 (ASTM D4966)		N/A	
Openness Factor	1%	3%		3%		3%	
Care & Washing	Do not soak. Clean by gently wiping with a sponge.	Do not soak. Clean by gently wiping with a sponge.		Do not soak. Clean by gently wiping with a sponge.		Do not soak. Clean by gently wiping with a sponge.	
Availability	Ex-stock	Ex-stock		Ex-stock		Ex-stock	
Colour Fastness	BS EN ISO 105 - B02:1999 (colour fastness to artificial light Std 5)	BS EN ISO 105 - B02:1999 (colour fastness to artificial light Std 5)		BS EN ISO 105 - B02:1999 (colour fastness to artificial light Std 5)		BS EN ISO 105 - B02:1999 (colour fastness to artificial light Std 6)	
Flammability Standards	BS 5867 (1980 Part 2, Type B), B1 DIN-4102	BS 5867 (1980 Part 2, Type B), B1 DIN-4102		BS 5867 (1980 Part 2, Type B), B1 DIN-4102		BS5867 (2008 Part 2, Type B), B1 DIN-4102	
Anti-Fungal	ASTM G21	ASTM G21		ASTM G21		ASTM G21	
Property	Dim Out	Dim Out		Dim Out		Dim Out	
Samples	Fabric samples available on request	Fabric samples available on request		Fabric samples available on request		Fabric samples available on request	



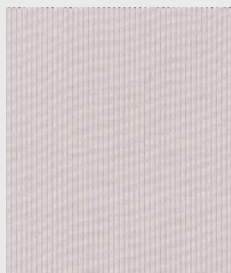
Uniview® 1000



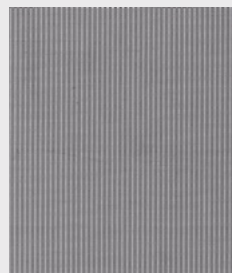
Limestone
RPU641- 1.83m
RPU652- 2.5m



Pale Ochre
RPU642- 1.83m
RPU653- 2.5m



Canvas
RPU643- 1.83m
RPU654- 2.5m



Admiral Grey
RPU645- 1.83m
RPU656- 2.5m



Fossil
RPU644- 1.83m
RPU655- 2.5m

Uniview® 3000



Crystal
RPU663- 1.83m
RPU630- 2.5m
RPU680- 3m



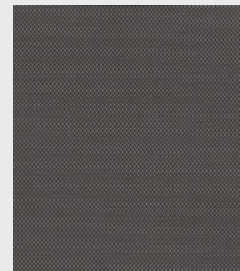
Beige
RPU664- 1.83m
RPU631- 2.5m
RPU681- 3m



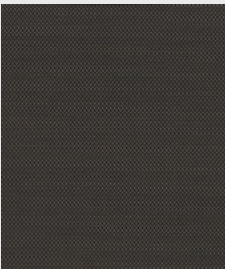
Soft Steel
RPU666- 1.83m
RPU633- 2.5m
RPU683- 3m



Pearl Grey
RPU665- 1.83m
RPU632- 2.5m
RPU682- 3m



Stellar
RPU668- 1.83m
RPU635- 2.5m
RPU685- 3m

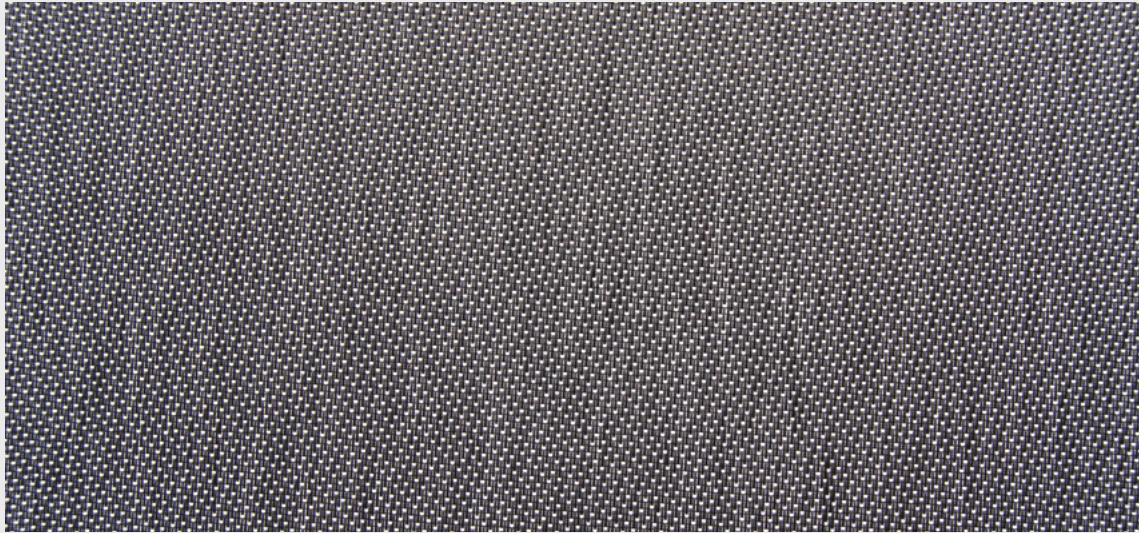


Black/Brown
RPU667- 1.83m
RPU634- 2.5m
RPU684- 3m



Jet
RPU669- 1.83m
RPU636- 2.5m
RPU686- 3m

Uniview® 3100



Twilight
RPU651- 1.83m
RPU662- 2.5m
RPU694- 3m



Winter White
RPU646- 1.83m
RPU657- 2.5m
RPU695- 3m



Linen
RPU647- 1.83m
RPU658- 2.5m
RPU697- 3m



Shadow
RPU648- 1.83m
RPU659- 2.5m
RPU693- 3m



Storm
RPU650- 1.83m
RPU661- 2.5m
RPU692- 3m



Nutmeg
RPU649- 1.83m
RPU660- 2.5m
RPU696- 3m

Uniview®

Uniview® 3100
Due to the nature of the
weave, the exterior of all
Uniview® 3100 are white.

Uniview® 3200 Superfine



Prima

LPU637- 89mm
RPU698- 1.83m
RPU704- 2.5m
RPU710- 3m



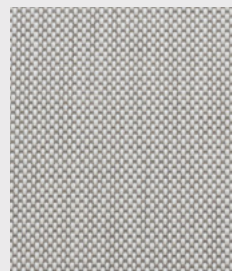
Dune

LPU638- 89mm
RPU699- 1.83m
RPU705- 2.5m
RPU711- 3m



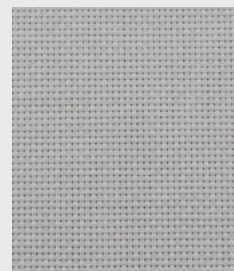
Spark

LPU639- 89mm
RPU700- 1.83m
RPU706- 2.5m
RPU712- 3m



Urbane

LPU640- 89mm
RPU701- 1.83m
RPU707- 2.5m
RPU713- 3m



Astral

LPU642- 89mm
RPU703- 1.83m
RPU709- 2.5m
RPU715- 3m



Spectre

LPU641- 89mm
RPU702- 1.83m
RPU708- 2.5m
RPU714- 3m

INNOVISION Limited

Visit us @ www.innovision.je or call to arrange a visit on 01534 507914



I N N O V I S I O N S O L U T I O N S

Uniview®